

THE RAKE AND HOE
GARDEN CLUB OF WESTFIELD

Celebrating Our 50th Year

PRESENTS

“DECK THE HALLS”

A HOLIDAY HOUSE TOUR
DECEMBER 7, 2002

NO CAMERAS OR PICTURE TAKING ALLOWED.

MANY THANKS TO OUR HOMEOWNERS
FOR GRACIOUSLY OPENING THEIR HOMES.

MR. AND MRS. SEAN FLANNERY
440 KIMBALL TURN • WESTFIELD

MRS. RUTH TATE
600 SHERWOOD PARKWAY • WESTFIELD

MR. AND MRS. FRED BUEHLER
119 WILD HEDGE LANE • MOUNTAINSIDE

MR. AND MRS. SCOTT BOND
229 EAST DUDLEY AVENUE • WESTFIELD

The Rake and Hoe Garden Club, Inc. of
Westfield
would like to thank the following:

Baron's Drug Store
243 E. Broad St., Westfield
Ticket Sales

Copies Now
251 North Ave., Westfield
Printing

Flowers...Naturally
Kay Cross
Fresh Flowers and Greens

Margaret Hanscom
Ticket and Poster Artwork

Lancaster, Ltd.
76 Elm St., Westfield
Ticket Sales

Timko Trees
500 North Avenue
Garwood

Weichert Realtors
185 Elm St., Westfield
Ticket Printing

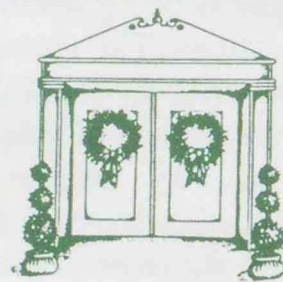
Westfield Community Players
1000 North Ave., Westfield
"Celebrate the Season Boutique"

RHGC

**THE RAKE AND HOE GARDEN CLUB, INC.
OF WESTFIELD**

Rake and Hoe Garden Club is celebrating our 50th anniversary this year. We were founded in 1952 by a group of women interested in having a vibrant active garden club. Membership in the Rake and Hoe Garden Club can satisfy a variety of interests. Community service, educational scholarships, stimulating speakers, courses in horticulture, floral, and landscape design, bird watching, conservation, flower shows, luncheons, workshops and trips — Rake and Hoe offers it all.

Federated with the National Council of State Garden Clubs, and the Garden Club of New Jersey, we have between 50 and 70 members all of whom share one thing in common — a love of flowers and gardening. Our membership is diverse, spanning all ages, interests and occupations. We feel our diversity is one of our greatest strengths. Each member brings her knowledge to the group, sharing it the way a friend shares seeds or cuttings with a friend.



Deck the Halls 2003
Committee Chairs

Co-Chairs:

Linda Parker and Colleen Schmidt

House Selection Committee:

Anna Daurio and Carol Schirm

Publicity:

Pat DelDuca

Tickets:

Kay Cross

Printing and Brochure:

Linda Winter

Treasurer:

Pamela Kolb

House Chairs:

The Tate House: Jill Sitcer and Nancy Smith

The Flannery House: Karen Jolley-Gates and Barbara Mullin

The Bond House: Patty Kreider and Maryann Pietruszki

The Buehler House: Alice Cowell and Elaine Welsh

Album donated and compiled by Karen Jolley-Gates; photographs
by Janet Gardner, Beth Hanscom, Barbara Mullin, Sophie Stoppas and other members.

See Westfield Homes Decked For Holidays

WESTFIELD—Deck the Halls, the Rake and Hoe Garden Club of Westfield's holiday house tour, will be conducted on Dec. 7, 10 a.m.- 4 p.m. Tour four homes decorated for the holidays, and shop at the Celebrate the Season Boutique, which will be open 9 a.m.- 5 p.m.

The cost of the tour is \$25 if tickets are purchased in advance, \$30 at the door. Buy tickets at Baron's Pharmacy, 243 E. Broad St., or at Lancaster, Ltd., 76 Elm St., both in Westfield.



TWELVE DAYS OF CHRISTMAS—The grand columns of this Victorian home are flanked by urns filled with wreaths, fresh fruit, and greens. The classy, festive mood is highlighted by cranberry swags and cascading hydrangea roping.



MERRY MAKERS—The Rake and Hoe Garden Club will sponsor a decorated holiday house tour on Dec. 7, 10 a.m.-4 p.m. with a boutique at the Community Players Theater. The chairperson look over the selection of crafts to be sold. Pictured from left are Elaine Welsh, Patty Kreider, Nancy Smith, Janet Gardner, and Karen Jolley-Gates.



HOLIDAY HOME TOUR—Rake and Hoe Garden Club house tour chairperson Linda Parker, left, and Colleen Schmidt, right, glance over the house tour tickets with Fran Brader of Weichert Realtors, whose office donated the printing expenses.

Rake And Hoe Garden Club Of Westfield Invites Public Inside For House Tour

WESTFIELD—Deck the Halls, the Rake and Hoe Garden Club of Westfield's holiday house tour, will be conducted on Dec. 7, 10 a.m.- 4 p.m. Come to see four

homes decorated for the holidays, and shop at the Celebrate the Season Boutique, which will be open 9 a.m.- 5 p.m.

The cost of the tour is \$25 if

tickets are purchased in advance, \$30 at the door. Buy tickets at Baron's Pharmacy, 243 E. Broad St., or at Lancaster, Ltd., 76 Elm St., both in Westfield.

The Westfield Leader and THE TIMES of Scotch Plains – Fanwood



THE HOLIDAYS ARE COMIN'... The Rake and Hoe Garden Club of Westfield will sponsor a decorated holiday house tour on Saturday, December 7, from 10 a.m. to 4 p.m., with a boutique at the Community Players Theater. In preparation for the event, the chairwomen look over the selection of crafts to be sold. They are, pictured left to right: Elaine Welsh, Patty Kreider, Nancy Smith, Janet Gardner and Karen Jolley-Gates. Tickets, for \$25, are available at Baron's Drug Store and Lancaster Ltd, or may be obtained for \$30 at the door.

The Flannery Home
440 Kimball Turn, Westfield
"A Cup of Christmas Tea"

An authentic Russian sleigh filled with greens greets you as you approach this intimate colonial home. The entrance hall welcomes you with angels, garlands and topiaries. Tea settings for different times of the day are displayed in every room. Holly and ivy are interwoven in the Christmas designs and color is used differently in each room for effect.

To the right of the entrance hall is the dining room. Opulence pervades through the use of silver, gold, greens and an abundance of lush flowers. A Georgian style silver tea set contains a delicate flower bouquet. A champagne bucket overflows with gorgeous blooms complementing the room's rich coloring. To the left, the living room abounds with Victorian charm. This era's traditions are captured in the tree and the porcelain dolls amidst the tea settings. The jeweled fruit and topiaries also add a special touch of years gone by.

The family room's quiet and repose are a natural setting for tea, set for the man of the house. The room features a unique tree shaped screen in front of the fireplace and a stocking shaped cornucopia filled with fresh flowers. A wave of bamboo holds tranquil petite flowers. Looking out the window, you can see a boxwood frame placed inside the window.

As you pass through to the kitchen, your eye is drawn to the bamboo tripod. The kitchen reflects a French country style. The table set with "Christmas Charm" welcomes the family for breakfast tea. Holly, ivy, mixed vegetables, a multitude of peppers and a rock sugar tree are used in various arrangements throughout the room to provide the flavor of a Provencal Christmas. Upon exiting, notice the open French basket brimming with freshly cut evergreens.

The Flannery Home

Co-Chairs:

Karen Jolley-Gates and Barbara Mullin

Decorations by:

Exterior: Patricia Looloian and Elizabeth McEntee

Entrance Hall: Jeanne Monaghan

Dining Room: Barbara Mullin and Letty Hudak

Living Room: Elizabeth Dwyer and Karen Jolley-Gates

Den: Dawn Harrison and Barbara Murphy

Kitchen: Ellen Cuddy, Diana Edkins and Barbara Mullin















The Entrance Hall







The Dining Room



















The Living Room













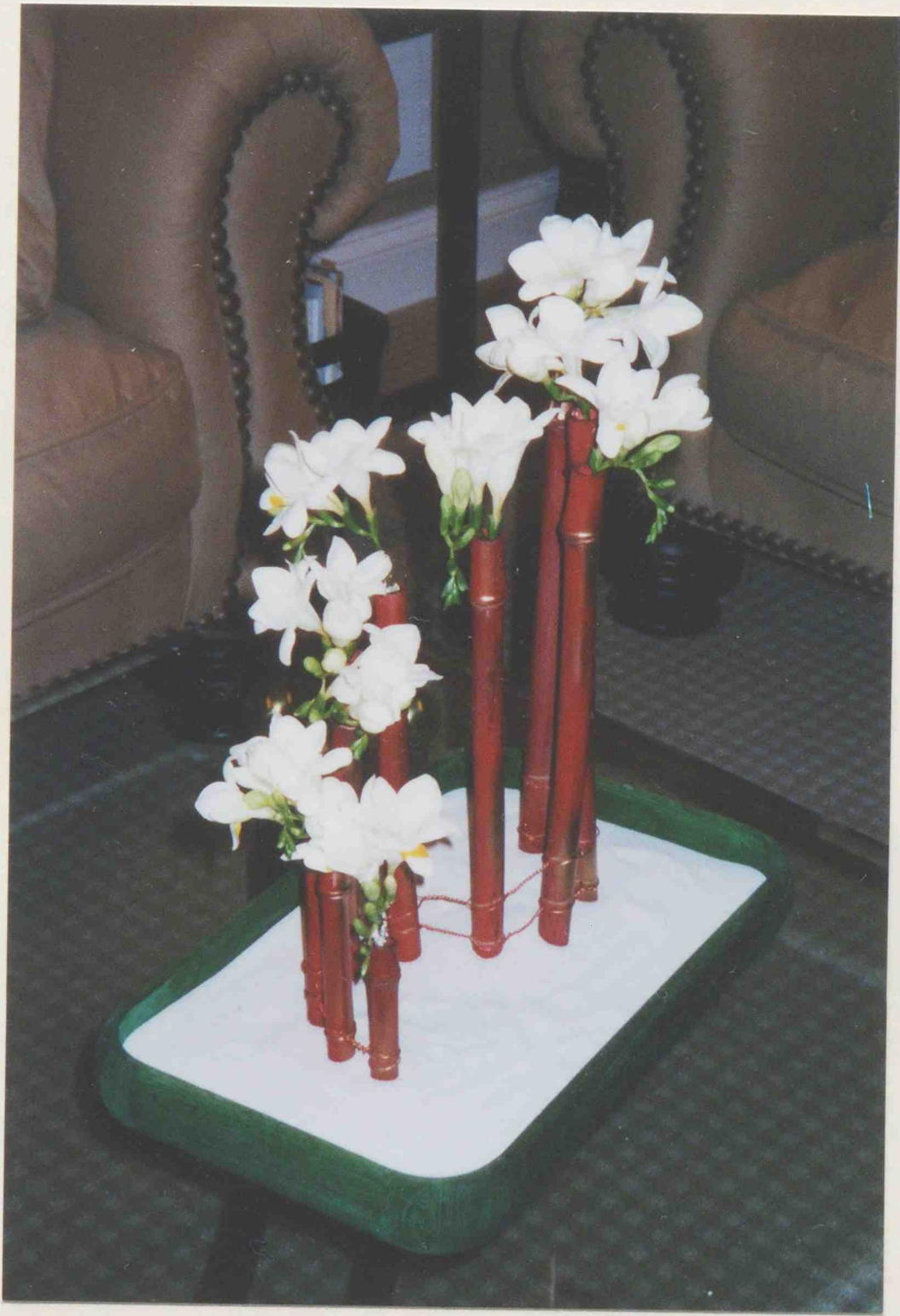


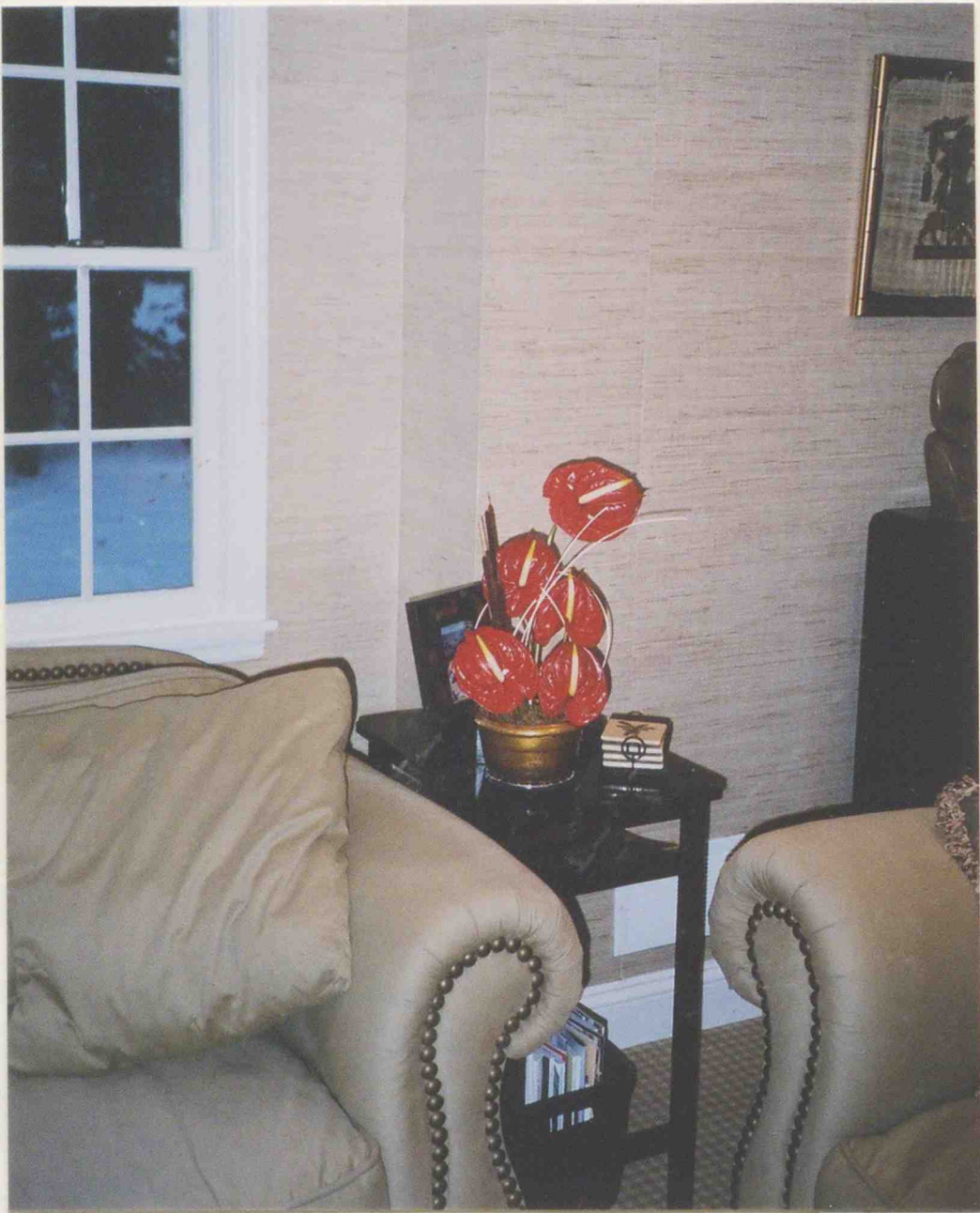




The Family Room













The Kitchen





The Tate Home
600 Sherwood Parkway, Westfield
"Reflections of Christmas"

Holiday reflections abound in this lovely home. As you come up the front walk, look to your right at the birdbath lavished with reflective balls and holiday greens. Antique planters at the entrance hold layered Christmas trees made of concentric circles of colorful and varied materials. In the foyer, the mirror on your right bears the reflection of the arrangement on the table in front of it, and the open decorated door. Swags of greens and sparkling fabric dress the banister in this stately center hall.

Amaryllis blooms welcome you into this gracious living room where wrapped packages on the window seat await holiday guests. Shimmering garlands of silver and gold adorn the fireplace mantle and the beautiful armoire. A topiary tree made of dried cockscomb sits atop an evergreen wreath. The tea tray in front of the sofa provides a place for a quiet moment to reflect on memories of Christmas' past. As you pass into the cozy sunroom, garland and wreaths decorate the windows. Image sitting around the tree glistening with snowflakes, as you enjoy opening that special Christmas present.

The dining room table is ready for guests with its elevated flower arrangement of roses and orchids. A punch bowl filled with floating flowers sits on the side table. The fireplace has been decorated with a horizontal arrangement and an ivy tree graces the hearth. A dried hydrangea wreath hangs above gifts nestled on the window seat. Then as you move into the kitchen you are greeted by a pyramid of vegetables, greens and ribbons on the center island. A rosemary topiary tree stands ready to provide herbs for the cook. At the sink an epergne is being decorated for use in the holiday decorations. The greenhouse window is filled with miniature pots of holiday flowers and herbs. As you leave, swags of greens and ribbons adorn the back hallway. On the back porch, a different set of topiaries draw your attention. The white stick stars on the trees in the yard welcome the season and bid you farewell.

The Tate Home

Co-Chairs:

Jill Sitcer and Nancy Smith

Decorations by:

Exterior: Jill Sitcer, Diana Kazakis, Tracy Criscitiello and Liz Strong

Entrance Hall: Eileen Perley, Jill Sitcer and Marylyn Straight

Living Room: Pam Kolb and Nancy Smith

Kitchen: Sherry Elsasser, Beth Hanscom and Darielle Walsh

Dining Room: Eileen Perley and Marylyn Straight

Sun Room: Ginny Leiz and Clare Minick











The Foyer













The Living Room









The Sunroom













The Dining Room













The Kitchen







The Bond Home
229 East Dudley Ave., Westfield
"The Twelve Days of Christmas"

The grand columns of this stately Victorian are flanked by urns filled with grapevine wreaths, fresh fruit, flowers, berries and greens. Upon entering the home the story of "The Twelve Days of Christmas" begins to unfold. A garland of cascading roping using hydrangea, blue-berried juniper and pinecones drapes the foyer staircase. On your left the living room sets the stage for a grand ball. Gifts are presented in drum shaped boxes. The beautiful grand piano stands ready for the music to begin. A beribboned flute awaits its piper. The mantle has been adorned with an arrangement of fresh roses, berries and greens. The wreath encircling the ballerina on the coffee table continues the splendor of the mantle décor. As you exit the room observe the tabletop tree with the ladies dancing and the lords leaping. The evening promises to be magical.

The library mantle with its dried arrangement of cattails, field grasses, goldenrod, thistle and statice provides a welcoming refuge for our feathered friends. Eggs nestle in a basket of greens on the coffee table. Guests are called to the dining room to enjoy dessert of pastry swans swimming adrift a pool of chocolate. The eyes feast on a low arrangement of poinsettias beneath the elegant chandelier. The magnificent lilies on the buffet attract revelers to share a cup of Christmas cheer around the silver punch bowl.

The kitchen beckons you to the heart of the home where no one cries over the tree of milk pails spilling white blossoms. Cranberry swags tasseled with pinecones invite you to enjoy the view beyond. The center island holds an arrangement of grand proportions nestled in a clear vase filled with limes and cranberries. Partridges perch among a pyramid of pears in a tiered centerpiece on the breakfast table. A trio of arrangements on the family room mantle looks toward the partridge presiding atop the pear-laden Christmas tree.

The Bond Home

Co-Chairs:
Patty Kreider and Maryann Pietruszki

Decorations by:

Rosemary Atwell

Fran Brader

Anna Daurio

Jane Gross

Cathy Knights

Patty Kreider

Margo Partridge

Maryann Pietruszki

Carol Schirm

Sophie Stappas

Linda Winter







The Entrance Hall





Maryann Pietruszki and Sophie Stappas





The Living Room













Sophie Stappas and Jane Gross

The Library







The Dining Room









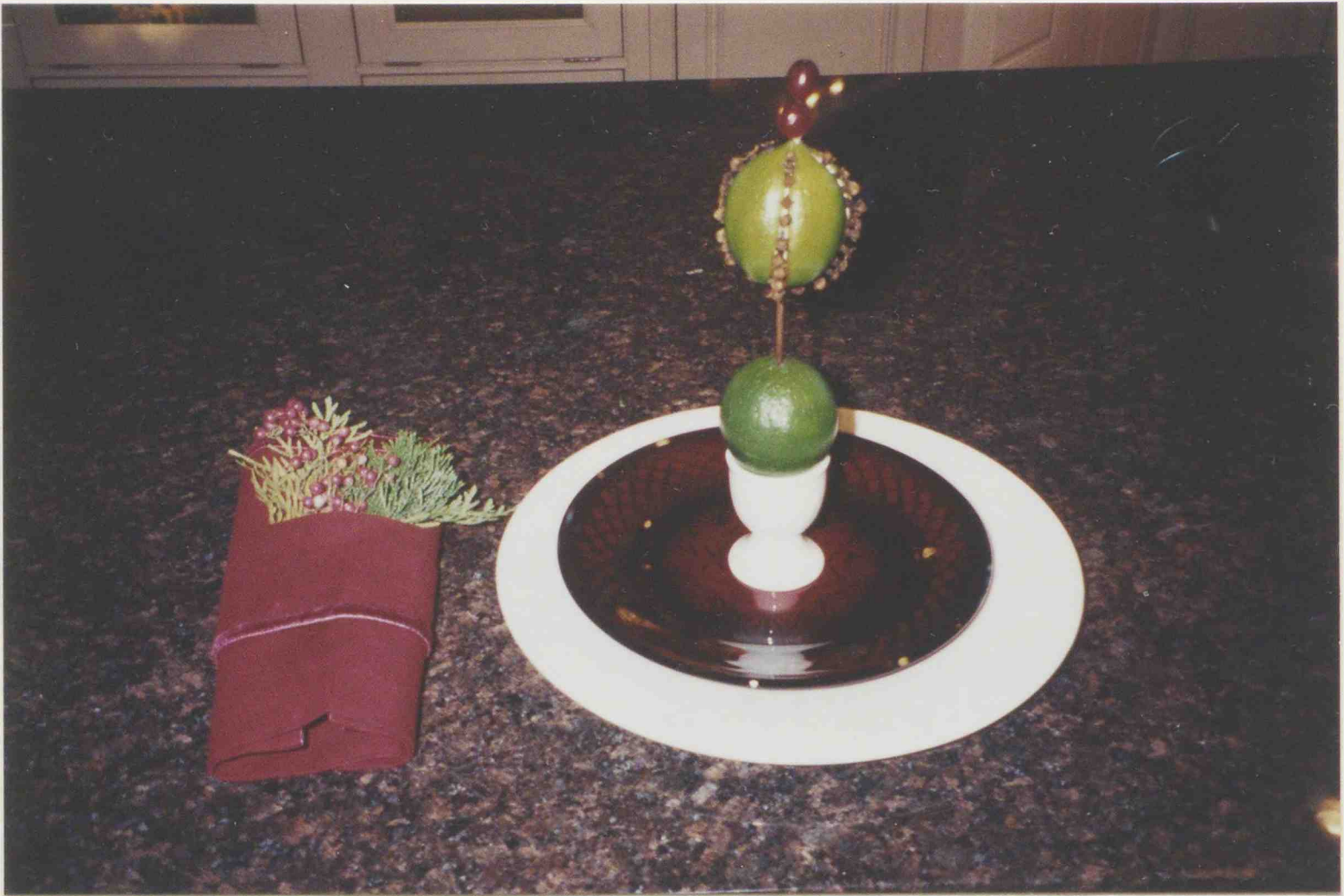




The Kitchen















Patty Kreider, Rosemary Atwell and Linda Winter





The Family Room









The Buehler Home
119 Wild Hedge Lane, Mountainside
"By Invitation Only"

This home of elegance is reminiscent of a stately English cottage. A classic Bentley, filled with Christmas treasures, welcomes you in the motor court. The antique urns filled with curly willow, berry branches and greenery accent the outside décor. The front door is adorned with a unique basket depicting the theme of the house, "By Invitation Only". As you enter the maid welcomes you to the party. Do not miss the spray of magnolia leaves, bay leaves and dried hydrangea on the stairwell railing. A spiral tree laced with fresh calla lilies graces the entrance table. Look into the living room on the right and gaze at the mantle decorated with greens, beads and angels. The far window features a tabletop tree enhanced with fresh flowers. The cornice and bookshelves are embellished with greens and novelties.

Next, step into the kitchen and look at the window display of beaded fruits and greenery, which coordinates with the home's décor. A Christmas goose centerpiece adds a flair of ambiance to the table. The swags of pine and holly on the doors continue the festive mood. Proceed into the den and glance at the antique doll upon a sleigh complementing the mantle. Gaze at the grapevine wreath decorated with artichokes and pomegranates. As you stroll from the den into the dining room, admire the floral designs of white poinsettias and candles in the bar area.

The aura of sophistication invites you into the formal dining room. First cast your eyes on the table set for the evening's gala event and marvel at the gorgeous centerpiece. Your eyes will be drawn next to the sideboard where the large arrangement of branches, grasses and flowers adds to the glamour. And finally, the Christmas tree decked with sprayed curly willow, hundreds of crystal pendants, lights and other adornments will dazzle your imagination.

The Buehler Home

Co-Chairs:

Alice Cowell and Elaine Welsh

Decorations by:

Door Treatment: Martha Triarsi and Pat DelDuca

Entrance Hall: Pat DelDuca and Kris Luka

Living Room: Martha Triarsi and Bobbi Grecco

Kitchen: Alice Cowell, Lisa Feick and Nina Donohue

Bar Area: Kris Luka and Pat DelDuca

Dining Room: Karyn Tate, Kay Cross and Elaine Welsh

Antique car provided by and decorated by Margaret Sailor



The Living Room









Karyn Tate



The Kitchen



The Family Room







The Dining Room













Elaine Welsh and Alice Cowell

"Celebrate The Season Boutique"
Westfield Community Players Theater
1000 North Avenue West

The "Celebrate The Season Boutique" is being held at the Westfield Community Players Theater, conveniently located at the corner of Edgewood Avenue and North Avenue West in Westfield.

As part of the Rake and Hoe House Tour, the theater has been transformed for a different kind of performance, the "Celebrate The Season Boutique". Please plan to visit and enjoy hot cider and homemade cookies. Outside the theater there will be kissing balls, tabletop trees, candle rings and more offered for sale. Inside you can browse through our specialty areas. The "Gifts from the Heart" area features items appropriate for teachers, friends and hostesses. Our "Out on a Limb" area showcases gifts for bird lovers as well as homemade gifts for nature lovers. The "Tea with Friends" area has an assortment of home-baked foods plus teacup ornaments and other "tea" related items. For the collector, we have a "Winter Fun" area with snowmen and snowflakes and a "Heaven Sent" area featuring angels. There is something for everyone at reasonable prices along with the sounds, smells and tastes of the holidays.

The Westfield Community Players was founded in 1934 and has brought more than 200 comedies, dramas, musicals and mysteries to life on its stage. Performances are held in the group's delightful 150 seat theater. The group's productions are part of the active cultural scene in Westfield and surrounding communities. The Rake and Hoe Garden Club of Westfield appreciates the use of this wonderful facility.

Celebrate the Season Boutique

Co-Chairs:
Janet Gardner and Anna Lanam

Committee Members:

Inge Bossert
Jean Groszmann
Fran Hickman
Gayle Lechner
Marianne Murray
Clarissa O'Hern
Helen Pasterczyk
Peggy Smith





Above: Peggy Smith, Anna Lanam, and Kris Luka at the Live Green Workshop
Below: Peggy Smith, Alice Cowell, Marianne Murray and Helen Pasterczyk



Colleen Schmidt and Janet Gardner





Above: "Out on a Limb"
Below: Garden Ornament Tree, Tea cup Tree and Pinecone Ornaments



"Gifts from the Heart"



"Winter Fun"



Above: "Winter Fun"
Below: "Heaven-sent"



"Tea with Friends"



Anna Lanam and Ellen Cuddy on the day of the Boutique